



ROCKHOUND RAMBLINGS

MARCH 2020 • PASADENA LAPIDARY SOCIETY® • PASADENA, CA

Editor's Message

Dear Fellow Members,

Unfortunately, Ellen Ferrell is sick so I have the honor of providing updates for this month...

Last month's workshop went well with Kevin Koppers coming out to use the sphere machine and Ferdie Sanchez making gem trees as prizes for the upcoming show. In addition, the February PLS meeting featured part 1 of a spectacular video about Rhodochrosite. (Be sure to come to this month's meeting on the 17th for part 2!)

March is a busy month for the PLS, as we are getting ready to host our annual show on April 25-26. We need volunteers to keep the show running smoothly and there are a vast variety of jobs to choose from. I personally enjoy the raffle table, being a greeter (with a perk of being able to say 'hi' to everyone who comes), and the silent auction table (where you get to expound about the rocks you are selling). However, while there are many opportunities, – demonstrations, showcases, grab bags, or the membership table – the final choice is yours!

March's field trip will be to the Victorville Tailgate. This is not a hosted PLS field trip so there will be no meet-up or sign-in sheet. However, the Victor Valley rock club has a field trip on the 14th from 9 AM to 1 PM. I would recommend getting there early just in case you can't find the meet-up location. (See page 3 for more details)

There is the board meeting on the 5th at Matt Denny's (where all members are welcome to attend), the workshop on the 8th, and the membership meeting on the 17th.

– Jared Nishimura, Editor

Pasadena Lapidary Society®

The name Pasadena Lapidary Society (PLS) and its associated logo are registered trademarks of The Pasadena Lapidary Society, Inc.

© 2020 The Pasadena Lapidary Society, Inc. Text, images, and other content in this publication are property of The Pasadena Lapidary Society, Inc., except for content that is in the public domain or is used with permission of the copyright holder or qualifies as fair use under copyright law. *Rockhound Ramblings* is available on the PLS website and may be freely linked to, but other distribution or re-publication, in part or whole, is prohibited unless written permission is granted by The Pasadena Lapidary Society, Inc.

Fluorescent Rocks

By Sue Pang and Steve Cady

In New Jersey, the Sterling Hill Mining Museum is known to have the world's largest publicly displayed collection of fluorescent mineral. However, because New Jersey is a bit far, we instead visited the Moqui Cave, on our recent winter road trip to Kanab, Utah. Unlike what the name suggests, this is not a natural cave, but rather a cave turned into a museum which is currently operated by the Chamberlain family. If you enjoy viewing fluorescent minerals, then you may want to visit the Moqui Cave.

The Moqui Cave was originally made by Native Americans for shelter or food storage. Garth Chamberlain bought this cave and turned it into a dance hall and tavern; his goal was to make it into a tourist destination. Eventually, however, Chamberlain stopped the concerts and turned Moqui cave into a museum.

Regardless of its past history, Moqui cave looked amazing, with a dinosaur greeting us outside the front entrance. A member of the Chamberlain family welcomed us when we entered the museum. After a small entrance fee, our host gave us a short introduction of the museum exhibits before we embarked on a self-guided tour.

First, we entered a dark room, where there were many unusual arts, fossils, arrowheads, and minerals which glowed with several different neon colors under ultraviolet short and ultraviolet long lights. Some fluorescent minerals include fluorite, gypsum, ruby, opal, agate, quartz and amber which will glow after a few seconds of ultraviolet light. Fluorescent substances absorb the ultraviolet light and then immediately re-emit the light. Moqui cave contains one of the largest collections of fluorescent minerals in the United States...

After visiting the dark room, we entered into a room which was previously a saloon. The late Garth Chamberlain, created this beautiful mosaic inlaid with slabs and stones on the bar counter top. As I spun on an original bar stool, I noticed how intricately the slabs were put together to form the bar table. For a bar counter, this one topped any other I had seen.



Unfortunately, Moqui Cave is rather far away, so if you want to see fluorescent specimens near here, there is a small collection inside a case at the Santa Barbara Museum. Sadly, I have yet to go to the New Jersey fluorescent mineral collection... I'll just put that on my bucket list.

Officers, Trustees, and Committee Chairs

Ellen Ferrell, President (727) 512-0381 Ellenbf2007@aol.com
Michelle Vandebroek, VP (213) 926-8060 vndnbr7@aol.com
David Lacy, Secretary (626) 339-3240 deeceelink@earthlink.net
Philip Lahr, Treasurer (818) 926-3163 plkslahr@att.net
Sue Pang, Federation Dir. (310) 889-8480 sp2019pi@gmail.com

Trustees Marcia Goetz, Chris Kyte, Joe Goetz

Committee Chairs

Annual Show	Ellen Ferrell	Michelle Vandebroek (Co-Chair)
Bulletin	Jared Nishimura	Education Joan Harrison
Display Table	Ferdie Sanchez	Historian TBA
Field Trips	Rex Nishimura	Librarian Jennifer Jang
Hospitality	Mona Ross	Publicity TBA
Membership	Yvette Fitzgerald	Sunshine Ellen Ferrell
Social Media	Elizabeth Weston	Ways & Means Philip Lahr
Technology	Ben Shutman	Workshop Carolyn Duncan
Webmaster	Elizabeth Weston	

Membership

Membership per calendar year is \$25; for additional adults at the same address, \$15. Junior members are \$10. There is an initiation fee of \$10 per person to cover costs of name badges, etc.

Renewals are due in October and delinquent after December 31. Mail checks to PO Box 5025, Pasadena, CA 91117-0025.

Meetings

Board Meetings – 1st Thursday of the month
7 p.m. at Matt Denny's Ale House
145 E Huntington Dr, Arcadia
Dinner at 6 p.m. PLS members are welcome.

Workshop – 2nd Sunday of the month
9 a.m.–5 p.m. \$3 for half-day, \$5 for a full day. Equipment instruction, liability waivers, eye protection, and closed-toe shoes are required. For directions, please call (909) 455-4360 (cell) or (909) 593-2781, or email gem.quest38@gmail.com. Bring lunch!

Junior members 9 and older are welcome with adult supervision.

Program Meetings – 3rd Tuesday of the month
Doors open at 6 p.m. Meeting is 6:30–8:45 p.m.
Pasadena Central Library, 285 E Walnut St.

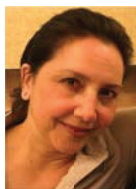
Contact Us

Email: info@PasadenaLapidary.org **Instagram:** /PasadenaLapidary
Facebook: Pasadena Lapidary Society **Twitter:** @pasalapidary
Pasadena Lapidary Society
PO Box 5025
Pasadena, CA 91117-0025

Editor: Jared Nishimura pasadenalapeditor@gmail.com

Send articles by the 15th for publication in next month's issue. Very short items can get in as late as the 22nd but are not guaranteed to make the next issue.

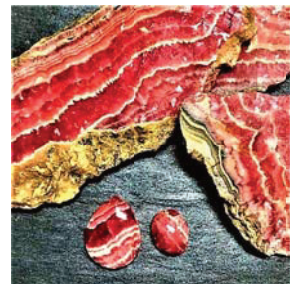
Program Meeting – March 17th



Rhodochrosite (Part 2)

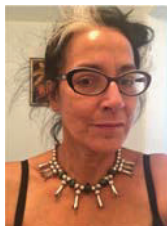
The next General Meeting takes place on March 17. Join us for part II of “Rhodochrosite-Red Treasure of the Rockies – The story of the Sweet Home Mine.”

The Rock of the Month talk will feature a discussion on exhibiting a display case at the annual show in April. Sharing your lapidary enthusiasm in a display case is a fun way to connect with other rock-hounds and foster interest in PLS. Seasoned members will share their experience(s) and give advice and ideas.



– Michelle Vandebroek, Vice-President

Welcome New Members!



Amanda Gerberich has loved rocks since she was a kid. “As a kid I was often seen picking up rocks.” In high school, Amanda took a silver-smithing class and truly enjoyed it. For the past 2 1/2 years she has been part of a Lapidary and silversmith class before joining the PLS. She attributes some of her interest in rock hunting to her great-grandfather, Walter L. Nelson, who was an avid rock-hound and arrowhead collector. Look for her on some upcoming rock hunting field trips!

Educational Corner

On January 24th, Mona Ross, Nancy Robb and I represented PLS at Eliot Science Night in Pasadena. There were approximately 1200 attendees. Thank you to Mona and Nancy for sharing time and very interesting specimens.

Thank you, also to Janie Duncan, who on January 29th gave her wonderful, in-house geology presentation to 2 groups of homeschooled children and their families. Thank you to Mona, for assisting her.

Additionally, if you would like to take a 2 hour shift at the Demonstration table during our April club show, please text or email me. (323) 640-4394. liveoak180@yahoo.com.

~Joan Harrison

PLS Shirts Available!

To order PLS t-shirts (\$10), ball caps (\$11), and vests (\$15), contact Ellen Ferrell: (727) 512-0381 or Ellenbf2007@aol.com.

Equipment Sale!

Ronald F. Schwarz was a long time resident of South Pasadena who counted lapidary and jewelry making among his many talents and interests. Ronald's family donated equipment and stone from his workshop to PLS for another generation to learn with and enjoy. Contact Philip Lahr (818 926-3163 or plkslahr@att.net) for photos, descriptions, and prices of an 18-inch gravity feed saw, a 6-inch saw body, a sturdy home built grinder/polisher, an angle grinder, and a 24-inch Rociprolap.

Coleman Tent trailer with new tires for sale. good condition - \$1,000. Call Joe at 626 260-7239.

Field Trip – March 14th Victorville Tailgate

The Victorville Tailgate is like a mini-Quartzsite, with the exception that you will find material being sold by mostly amateur/semi-professional collectors. You may camp in the desert for free or just come up for the day. It will take about 105 minutes to get to the tailgate from Pasadena. Mornings can be cool, so bring a sweater. **No signup is needed for this trip.**

The Victor Valley Gem and Mineral Club will also sponsor a field trip to the tricolor marble quarry where you can find marble in a lovely combination of green, white, and gray. The field trip starts at 9AM and will return at 1PM, but you probably should line up by 8:30.

The coordinates for the tailgate are: N34.669993°
W117.110504°

Questions? Contact: rexch8@yahoo.com –Rex Nishimura

Show Your Work in a Display Case!

You can help make our 62nd annual show a huge success by making a display case. What makes our club great is when everybody gets involved. Thus, I am asking for you to put together a display case. I am putting together 2 cases. One that will display things we make and do in the work shop and another will be a club case that will show individual work. If you don't want to "do" a whole case then this is the perfect way for you to get to show your talent with none of the hassle of setting up a whole case. I will be collecting items for these cases at the next 2 meetings and the Friday before the show. Otherwise, you can bring your stuff to the workshop and leave it with Ellen or anyone at the front sign in desk. The more we have to display the better advertising for our club. However large or small, we need your participation. Call me if you need any help.

~Martha Wilson (626)798-9085

Annual Show – Volunteers Needed!!

If you want to support the club, volunteer at the annual show on April 25-26. For questions, or more information, contact Michelle Vandembroek at Lapidary908@aol.com.

Workshop – March 8th

Workshop hours are 9 a.m. to 5 p.m. Half day is \$3, all day \$5. If this will be your first time using equipment at the Workshop, a safety tour is required. Safety tours are at 9:15. Capping 101 begins after the safety tour. We may close early due to heat, storms, etc. If you plan to arrive late in the day, please call ahead.

For directions, call (909) 455-4360 (cell) or (909) 593-2781 or email gem.quest38@gmail.com. Park on the street or in the lot on the east side of the building. Do not enter by the ramp in the parking lot. – Carolyn Duncan

Rock and Gem Shows

March 6–8 NEWARK Mineral & Gem Society of Castro Valley, Location: Newark Pavilion, 6430 Thornton Avenue
Hours: Fri 10 – 4, Sat 10 – 6; Sun 10 – 5 www.mgscv.org

March 7–8 VENTURA Ventura Gem & Mineral Society, Location: Ventura County Fairgrounds, 10 West Harbor Blvd.
Hours: Sat 10 – 5; Sun 10 – 4 vgms.org

March 13–15 VICTORVILLE Victorville Valley Gem & Mineral Club, Location: Stoddard Wells Road/Dale Evans Pkwy
Hours: 9 – 5 daily vvgmc.org

March 14 – 15 TURLOCK Mother Lode Mineral Society, Location: Stanislaus County Fairgrounds, 900 North Broadway
Hours: 10 – 5 daily motherlodemineralsociety.com

March 21st FALLBROOK Fallbrook Gem and Mineral Society, Location: 123 W. Alvarado Street
Hours: 1 pm – 4 pm <http://fgms.org>

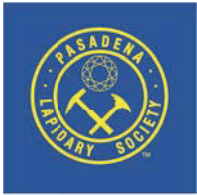
March 21 – 22 SAN JOSE Santa Clara Valley Gem & Mineral Society, Location: Santa Clara County Fairgrounds, 344 Tully Road; Hours: 10 – 5 daily www.scvgms.org

March 21 – 22 LEMOORE Lemoore Gem & Mineral Club, Location: Trinity Hall, 470 Champion St., Lemoore
Hours: Sat 10 am – 6 pm, Sun 10 am – 4 pm
<http://www.Facebook.com/AndLemoore>

March 28 – 29 ANGELS CAMP Calaveras Gem & Mineral Society, Location: Calaveras County Fairgrounds, 101 Frogtown Road; Hours: Sat 10 am – 5 pm; Sun 10 am – 4 pm
Calaverasgemandmineral.net

March 28- 29 ROSEVILLE Roseville Rock Rollers Gem & Mineral Society, Location: 800 All American City Blvd Hours: Sat 10 am – 5 pm; Sun 10 am – 4 pm www.rockrollers.com

March 28 – 29 TORRANCE South Bay Lapidary & Mineral Society, Location: Ken Miller Recreational Center, 3341 Torrance Blvd, Torrance, CA 90503 Hours: Saturday, March 28, 10 am – 5 pm, Sunday, March 29, 10 am – 4 pm
<https://southbaylapidaryandmineralsociety.com>



Pasadena Lapidary Society, Inc.
PO Box 5025
Pasadena, CA 91117-0025



#



California Barrel Cactus

SUNDAY	MONDAY	TUESDAY	WEDNESDAY	THURSDAY	FRIDAY	SATURDAY
March 2020	2	3	4	5 Board mtg	6	7
8 Workshop	9	10	11	12	13	14 Victorville Tailgate
15	16	17 Program meeting	18	19	20	21
22	23	24	25	26	27	28
29	30	31				