



ROCKHOUND RAMBLINGS

MARCH 2022 • PASADENA LAPIDARY SOCIETY® EDITOR: ALYSON NISHIMURA



Photo Credit [diego.cool](#)

~The Wide Spot in the Road~

It was Saturday morning and this was the first time in 2 years that I was going to lead a trip. We were going to go to three different locations; one is the "wide spot in the road", second is "Jason's place" and the last one is out by the railroad tracks off of Field Road. Imagine my surprise when I came out of the hotel and looked over towards the parking lot and saw a crowd of people. I went over to them with clipboard in hand and had them sign the waiver and gave them a little talk about safety and field trip etiquette, also, it was a little warmer that day and I didn't want anyone to get snake bit.

At 9:15 we headed out like a herd of turtles and drove to Mineola Rd and then onto "the wide spot in the road". We had to get there via a road in the wash and all but two vehicles made it. We stayed there for an hour, perhaps a little longer. Everyone was able to find agate, jasper and other collectibles. Then we headed over to "Jason's place" and we parked by some high tension towers.

Continued on pg 2



Officers, Trustees, and Committee Chairs

Officers

Marcia Goetz, President marcia.pls.emails@gmail.com
Dean Carlson, VP urtiledude61@yahoo.com
David Lacy, Secretary dececelink@earthlink.net
Philip Lahr, Treasurer plkslahr@att.net
Sue Pang, Federation Dir. sp2019pi@gmail.com

Trustees Ellen Ferrell, Chris Kyte, Joe Goetz

Committee Chairs

Annual Show Ellen Ferrell and Marcia Goetz

Bulletin Alyson Nishimura	Librarian Jennifer Jang
Hospitality Mona Ross	Display Table Ferdie Sanchez
Web Editor Elizabeth Weston	Publicity Elizabeth Weston
Membership Sue Pang	Sunshine Mona Ross
Social Media Elizabeth Weston	Webmaster Ben Shutman
Ways & Means Michelle Schurer	Workshop Phil Lahr

Contact Us

Email: info@PasadenaLapidary.org **Instagram:** /PasadenaLapidary
Facebook: Pasadena Lapidary Society **Twitter:** @pasalapidary
 Pasadena Lapidary Society, PO Box 5025, Pasadena, CA 91117-0025
Editor: Alyson Nishimura pasadenalapeditor@gmail.com Send articles by the 15th of the previous month for publication in next month's issue. However, no article guaranteed to be published or make the next issue.

Inspiration Unearthed Coming in August

The show for this year has been rescheduled for **August 20-21, 2022**. It seems so long ago that we were able to hold our show and in fact the last one was the CFMS show and convention at the L.A. County Fair Grounds. That was lots of fun and work.

We will have a show meeting soon via zoom. Anyone that wants to attend can - the more the merrier. Just let me know and I'll send you a link. Email is marcia.pls.emails@gmail.com

Meetings

Board Meetings – 1st Thursday of the month. Members welcome to join. Contact Marcia Goetz for more information.

Program Meetings – 3rd Tuesday of the month

Contact Marcia Goetz at marcia.pls.emails@gmail.com

Pasadena Lapidary Society®

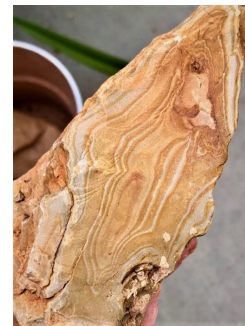
The name Pasadena Lapidary Society (PLS) and its associated logo are registered trademarks of The Pasadena Lapidary Society, Inc. © 2021 The Pasadena Lapidary Society, Inc. Text, images, and other content in this publication are property of The Pasadena Lapidary Society, Inc., except for content that is in the public domain or is used with permission of the copyright holder or qualifies as fair use under copyright law. *Rockhound Ramblings* is available on the PLS website and may be freely linked to, but other distribution or re-publication, in part or whole, is prohibited unless written permission is granted by The Pasadena Lapidary Society, Inc.

The Wide Spot in the Road (continued from p. 1)

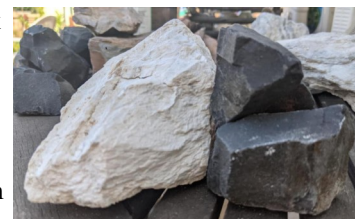
There were dirt racers that went flying by on the dirt road raising all sorts of dust, but that didn't deter our rock finding efforts and members then went out and started collecting many of the same things that we found at the wide spot but there were some exceptions.



There was a rock almost like a layered agate or rhyolite that had colors of blue and green. We all decided it was about time for lunch and after about another half hour we headed over to Field Road and went to collect the soapstone that's by the railroad tracks. At one point the area was used as a loading area for the train for rough soapstone and talc and it was probably more than likely used for making baby powder.



Then, we found a pile of black rock and looking at it appeared to be a fine grained basalt known as basinite which is used as backing of clear stones or stones like such as Mexican opal in which to see the color by putting a dark backing on it. So people collected that and we were there probably a half hour or so and that's when we decided to head on out and some people went home, some people went to Peggy Sue's and Marcia and I went back to the hotel where I flopped down and took a nap.



Now, I'm actually looking forward to next month's trip to Lavic Siding and the surrounding area. It should be good and this trip for the most part can be made with regular vehicles but if we go in other locations a high clearance vehicle would be best even if it's not four-wheel drive.

Lost somewhere in California, Joe Goetz

Welcome New Members!

We are delighted to have new/renewing rock hounds join our society! Welcome to Kathy Abellon, Holly He, Charles Lamb, Frances Lamb, Jessica Mirmak, Cynthia Murphy, Emi Onishi-Rozzin, Zachary Rozzin, Christian Schulze, Michael Uyeda, Brittany Washington, Alexandria Wiercigroch, and Shirley Wong!



Sue Pang, Membership Chairman



CFMS Show May 6-8 2022

The Antelope Gem & Mineral Club is going to be hosting the CFMS Gem Show and Convention on May 6, 7 and 8th of 2022. There is still time to get a form submitted to enter a display case - both competitive and non-competitive. There are also dealer spaces still available.

For our new members who have not been to a gem and mineral show yet, the California Federation Gem and Mineral Show is somewhat different from our own annual show in the fact that it has competitive cases, more dealers, the Society Directors have a meeting, and there's an awards banquet to cap off the weekend. (PLS hosted the 2019 show at the fairgrounds in Pomona). There is more information at [CFMS Show Forms – CFMS – California Federation of Mineralogical Societies \(cfmsinc.org\)](http://cfmsinc.org)

Anyone can attend the Awards Banquet on the 7th (see reservation form on the same website). It is a great opportunity to meet and talk to other rockhounds from clubs statewide and beyond.

Member-to-Member

Megan is looking for a piece of polished petrified wood around 10" diameter to use as a serving board. If anyone has anything similar to the attached image that they'd like to sell, she would like to buy! Contact her at mwm@mwm designs.com. Also, she misses her PLS friends and says "Hi."



If anyone has a trim saw they would like to sell, they seem to be one of the most sought after items by members. Advertise it here. Email Phil at plkslahr@att.net by the 15th of March for inclusion in the April newsletter.

Children's Area at the PLS Show

DONATIONS NEEDED

This year the children's area of the show will be offering rock collections for children to customize and purchase. We are in need of egg cartons with lids, and multiples of rock specimens that would fit in the egg cartons. If you have rocks that you would like to donate it would be greatly appreciated. Gather all your spare rocks, put them in a baggie with a slip of paper identifying what type of specimen they are. I have done this activity with school children and it is extremely popular.



Send me an email at nancyrobb@yahoo.com or DM me through Facebook messenger. Thank you so much! Nancy Robb

Workshop March 12, 2022

Are you ready for the Year of the Bolo?

One of the classes we are planning for the near future is a bolo making workshop. You will need to bring a large cabachon to use in making yourself a bolo. It can be almost any shape and type of stone you might want to wear or give, but the back needs to be flat and opaque stones are generally better. Why not get one or two made at the next workshop?

Remember that workshops are now on the second SATURDAY of the month.

The March workshop will be held on Saturday, March 12, from 9 am to 3 pm. Cost is \$5 for the full day or \$3 for either 9 to 12 or 12 to 3.

The saws and capping units will be available as usual. First timers need to attend the orientation which is held at the beginning of the workshop. To reserve your spot and get directions to the shop, call Marcia (626) 260-7239. An introductory class is generally offered after the orientation and experienced members are available to help all day.

Access the workshop by walking up the alley on the west side of the building and use the sliding door there. Please do not use the door at the loading dock.

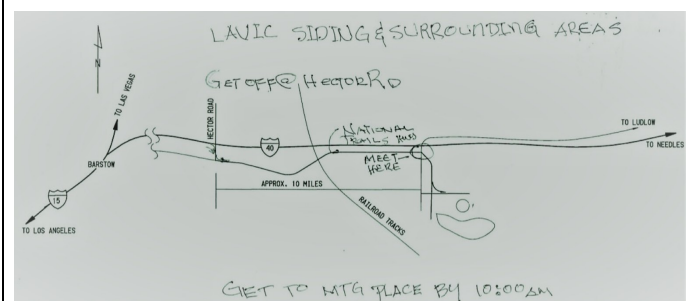
Field Trip on March 19th

The field trip is on March 19th to the Lavic Siding area. This is the area of fabulous jasper in a wide range of colors and shades. It is one area where you can step out of your car and start collecting just by bending over and picking the piece you want. Whether this is the first time or one of the many times over the years, it is a great place to go. The supply of jasper seems almost endless.

There is the possibility to do a little exploring of some of the older sites as well as finding some new ones around the area. Meet at the south side of the freeway where National Trails Highway crosses the 40 Freeway. It is about 10 miles if you get off at Hector Rd. (east of Newberry Springs), turn right to the frontage road National Trails Highway. At the stop sign turn left onto National Trails and travel about 10 miles to the meeting spot on the south side of the road.

You need to bring: hat, sturdy shoes or boots, sunglasses, lots of water, bag for rocks, rock pick, lunch.

If you plan to attend please call 626 260-7239.





Pasadena Lapidary Society, Inc.
PO Box 5025
Pasadena, CA 91117-0025



Thanks to Marcia Goetz, Sue Pang, and Tennyson Kwok for the photos from our February field trip and workshop!

March Speaker: Walt Lombardo, Gem Pegmatites of Southern California

Southern California is known worldwide for the production of gemstones & mineral specimens from the granite pegmatites in San Diego, Riverside & San Bernardino Counties. Some of the better known gem minerals are Tourmaline, Garnet, Aquamarine, Morganite, Kunzite, Quartz, Topaz & Lepidolite. Walt will talk on the regional geology which made these deposits possible, history of mining in Southern California, some of the more important mines & the gem minerals that they produced.



Dear Fellow Members,

March is here and it's been really warm, although the groundhog saw his shadow and so it may cool off a little. I found a bright spot though - the first apricot bloom came out yesterday. A good dose of deep watering and the sunshine must have helped it. There are some more that look like they will blossom very soon also. Rocks and blossoms are both pretty.

Mary Pat Weber presented our February program on Caves and it was very informative. We all loved the pictures. Mary Pat and Richard Weber always provide a wonderfully educational program.

We held a show meeting this week and several things were discussed. Christine Tureaud is going to be the Raffle Chairman. We would like to thank Carolyn for her many years of service in this role. Christine is already planning what she's going to do and getting help. She asked that I mention that we will need quality raffle prizes. Pasadena Lapidary has always had great prizes at our previous shows, and we look forward to continuing our tradition. The prizes should be worth at least \$20-\$25. Nancy Robb is going to be the Kids Area Chair and she already has a great idea for us, which you can read about on page 3 of this newsletter.

At our workshop on Saturday, we had about the same amount of people as a Sunday workshop. Sue Pang, Membership Chair, was there and sat with me to learn more about the Membership process. We are eagerly looking forward to meeting in person so we can give out the many membership badges we have.

Next month our workshop will be on the second Saturday, March 12 from 9-3. If you need a workshop orientation, be sure to call me in advance so we can schedule someone to provide the orientation. Our Board Meeting will be on Thursday, March 3 and at that meeting the Board will decide if the March general meeting will be in person or again via Zoom.

Sincerely, Marcia Goetz, *President*

WE'RE ON THE WEB!

PASADENALAPIDARY.ORG