



# ROCKHOUND RAMBLINGS

MAY 2022 • PASADENA LAPIDARY SOCIETY® EDITOR: ALYSON NISHIMURA



## *~The Silver Lining of A Stagecoach Robbery~*

In 1872, William L. Kennedy, Robert L. Steward, and Richard C. Jacobs were hiding from authorities in Panamint City after stealing \$12,000 from a Wells Fargo stagecoach. Panamint City was a desolate, remote area which made it the perfect hideout from the law. During this time, the outlaws stumbled upon deposits of silver ore in Surprise Canyon. Eager to benefit from their find, the men ran into one problem: they were “wanted.” Consequently, the bandits devised and successfully enacted a plan to bribe Nevada Senator John P. Jones to resolve the problem of them being wanted in return for the bandits selling him their claim. After Senator Jones granted amnesty for the outlaws, Senator Jones formed the Panamint Mining Company in 1873. It didn’t take long for hundreds of prospectors to arrive in hopes of striking it rich. Within a year, the surge of people resulted in Panamint City boasting several stores, saloons, and even its own newspaper. At its peak in 1874, the city had a population of 2,000 people.

Continued on pg 2



## Officers, Trustees, and Committee Chairs

### Officers

Marcia Goetz, President	<a href="mailto:marcia.pls.emails@gmail.com">marcia.pls.emails@gmail.com</a>
Dean Carlson, VP	<a href="mailto:urteledude61@yahoo.com">urteledude61@yahoo.com</a>
David Lacy, Secretary	<a href="mailto:deeceelink@earthlink.net">deeceelink@earthlink.net</a>
Philip Lahr, Treasurer	<a href="mailto:plkslahr@att.net">plkslahr@att.net</a>
Sue Pang, Federation Dir.	<a href="mailto:sp2019pi@gmail.com">sp2019pi@gmail.com</a>

**Trustees** Ellen Ferrell, Chris Kyte, Joe Goetz

### Committee Chairs

**Annual Show** Ellen Ferrell and Marcia Goetz

<b>Bulletin</b> Alyson Nishimura	<b>Librarian</b> Jennifer Jang
<b>Hospitality</b> Mona Ross	<b>Display Table</b> Ferdie Sanchez
<b>Web Editor</b> Elizabeth Weston	<b>Publicity</b> Elizabeth Weston
<b>Membership</b> Sue Pang	<b>Sunshine</b> Mona Ross
<b>Social Media</b> Elizabeth Weston	<b>Webmaster</b> Ben Shutman
<b>Ways &amp; Means</b> Michelle Schurer	<b>Workshop</b> Phil Lahr

## Contact Us

**Email:** [info@PasadenaLapidary.org](mailto:info@PasadenaLapidary.org) **Instagram:** /PasadenaLapidary  
**Facebook:** Pasadena Lapidary Society **Twitter:** @pasalapidary  
 Pasadena Lapidary Society, PO Box 5025, Pasadena, CA 91117-0025  
**Editor:** Alyson Nishimura [pasadenalapeditor@gmail.com](mailto:pasadenalapeditor@gmail.com) Send articles by the 15<sup>th</sup> of the previous month for publication in next month's issue. However, no article guaranteed to be published or make the next issue.

## Inspiration Unearthed Coming in August

The show for this year has been rescheduled for **August 20-21, 2022**. It seems so long ago that we were able to hold our show and in fact the last one was the CFMS show and convention at the L.A. County Fair Grounds. That was lots of fun and work.

Nancy Robb is collecting cardboard egg cartons and small rocks for the children's area. If you can assist with this, contact [nancyrobb@yahoo.com](mailto:nancyrobb@yahoo.com)

To volunteer, email [marcia.pls.emails@gmail.com](mailto:marcia.pls.emails@gmail.com)

## Meetings

**Board Meetings** – 1st Thursday of the month. Members welcome to join.

**Program Meetings** – 3rd Tuesday of the month

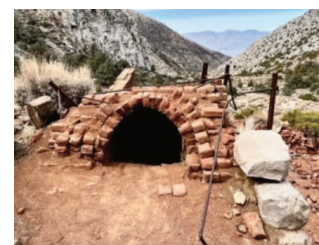
Contact Marcia Goetz at [marcia.pls.emails@gmail.com](mailto:marcia.pls.emails@gmail.com)

## Pasadena Lapidary Society®

The name Pasadena Lapidary Society (PLS) and its associated logo are registered trademarks of The Pasadena Lapidary Society, Inc. © 2021 The Pasadena Lapidary Society, Inc. Text, images, and other content in this publication are property of The Pasadena Lapidary Society, Inc., except for content that is in the public domain or is used with permission of the copyright holder or qualifies as fair use under copyright law. *Rockhound Ramblings* is available on the PLS website and may be freely linked to, but other distribution or re-publication, in part or whole, is prohibited unless written permission is granted by The Pasadena Lapidary Society, Inc.

## The Silver Lining of A Stagecoach Robbery

The original bandits who discovered the mine were still in Panamint in 1875. Legend states the outlaws planned to let the Senator do all the hard work while they would steal the silver as it was being shipped. However, instead of casting the silver into manageable bars, the experienced investors cast the silver into large, cannon-like balls weighing more than 400 pounds. The outlaws were unable to carry one of the balls of silver on a horse and thus, their plan was foiled. Unfortunately, similar to its neighboring city 50 miles away (Cerro Gordo) the Panamint silver mines were soon depleted. By 1876, a mere three years after they began, two of the major mines were exhausted. That same year, a flash flood swept down the canyon and washed away most of the town. Although mining would continue intermittently through 1948, no ore was reported as being shipped. Today, all that's left are a few foundations and a rich history of what used to be a flourishing community. The ruins of Panamint City are only accessible via a strenuous 5-mile hike and only around 100 people attempt the trek each year. Nevertheless, it is incredible to learn about the remains of Panamint City, a city whose boom ended just as quickly as it began.



*Many thanks to member Christian Schulze for hiking to Panamint City and taking these pictures for us!*

Information from

<https://www.legendsofamerica.com/ca-panamint/>

## Member-to-Member

Do you ever find your car full before all your gear is inside? Christine and Joel Tureaud have a Yakima Rocket Box Pro 12, aka a cartop carrier, for sale. It is new in the box and a roomy 58 x 36 inches. Does not include crossbars. Asking \$375, well below retail price. email [raidenmatsuno@gmail.com](mailto:raidenmatsuno@gmail.com)

Members, are you looking for something or do you have something to sell? Email Phil at [plkslahr@att.net](mailto:plkslahr@att.net) by the 15th of the month for inclusion in the newsletter.





## The Hunt Is On!

Sunday, April 10 proved to be an amazing day to head out to Pala and enjoy the fee dig at the Oceanview gem mine. Mom and I rushed out to Pala hoping to arrive by 9:30, and we did! We packed folding chairs and easy-ups because we were expecting the day to get hot. To our surprise, the weather was great and was mostly cloudy and cool



during the first few hours. However, things started heating up towards the afternoon. We were glad we had pitched the easy-up. While waiting for things to start, I investigated the tailing pile from previous rockhounds. Within minutes, I had found a beautiful, gemmy pink/green tourmaline (terminated, too!) and a pale pink kunzite. I was amazed that these made it through someone's screen unnoticed.

After 30 minutes spent in the tailings, the operation was about to start. Following their routine briefing, we grabbed our buckets and shovels and headed towards the huge heap of material in the center. I acted fast before the pile became overwhelmed with other eager hounds! We took our buckets of material and made our way back to our station.



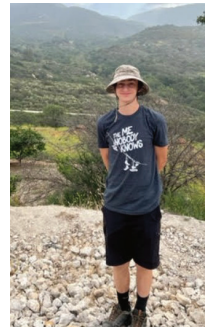
We were looking for tourmalines, kunzite/spodumene/triphane, aquamarine, morganite, lepidolite, and terminated quartz crystals –or whatever looked cool enough to

take home. In my first scoop of dirt, I discovered a decent-sized chunk of tourmaline. It was more or less a chunk broken off of a larger crystal, but it had a great deep pink coloration. Things were rather slow after that, and I only made small finds here and there. That was until I brought my bucket back and noticed a triangular shape peeking out of the dirt. I washed it off, and it turned out to be a stunning, deep



pink rubellite tourmaline with a green "rind"! It is about the size of a half-dollar coin. I continued to find nice sized tourmalines after that. It was my mom who had the best finds out of the two of us. In one bucket, she had discovered two sizable kunzites; the larger one was pale pink, and the smaller one was more lavender-purple. I also looked for quartz crystals. Every quartz crystal I found had unique features. Some twinned in odd ways, and one even had a broken side that had been recrystallized!

Mrs. Goetz showed me a fantastic cluster of smoky quartz crystals. About halfway through the day, a few of us joined a guided tour to see the active mines. I'm sure it was fun to see the sources of these beautiful gems, but I opted to stay behind and keep sifting dirt. My least-favorite part was leaving. As it became hotter, and we became more tired, the Oceanview mine began closing its doors for the day. It was well worth the 90-mile drive down, and I can't wait to go again!



Curtis Schurer

Thanks to Michelle Schurer for the photos!

## Workshop May 14, 2022

For the May workshop, we will practice drilling stone slabs and use them to make keychains. We have some polished slabs, but bring your own if you have them. Other supplies will be provided. We will start about 10:00 am or after any orientations and cabbing 101 classes are finished.

This month will be your last opportunity to shine up a large cabochon to use in the upcoming bola making class. It is fun to wear or gift something of your own making.

Remember that workshops are now on the second SATURDAY of the month.

The May workshop will be held on Saturday, May 14, from 9 am to 3 pm.

The saws and cabbing units will be available as usual. First timers need to attend the orientation which is held at the beginning of the workshop. To reserve your spot and get directions to the shop, call Marcia (626) 260-7239. An introductory class is generally offered after the orientation and experienced members are available to help all day.

Access the workshop by walking up the alley on the west side of the building and use the sliding door there. Please do not use the door at the loading dock.

See you there!

## Field Trip on May 7, 2022

The next field trip will be through the CFMS during the show on Saturday, May 7 to the Sierra Paloma onyx claim. Meet at 7 AM at the gate to the Antelope Valley Fairgrounds. Contact Ruth Hidalgo at [ruthyhh9@gmail.com](mailto:ruthyhh9@gmail.com) for more information.





Pasadena Lapidary Society, Inc.  
PO Box 5025  
Pasadena, CA 91117-0025



Dear members,

May is here! Last month, we were able to meet in person for the first time in over 2 years. It was wonderful seeing our 31 members and 7 guests. Janie Duncan presented an excellent and engaging program on the History of Beads. We had a full Display Table, done by Ferdie Sanchez, and a door prize drawing, done by Michelle and Curtis Schurer. Delicious refreshments were brought by Mona Ross, Janie Duncan and Trudy Krose and there was more than we could eat. Throughout the meeting, we heard the peacocks wandering around the church grounds.

We had a great field trip to the Oceanview mine and Curtis provided a field trip article you will find in this bulletin.

At the next meeting, on May 17, we will be showing the first half of a DVD on the Sweet Home Mine. The Sweet Home Mine in Colorado is famous for breathtakingly beautiful rhodochrosite crystals. The mine is known for finding the Alma Queen in the 1990's, and although the mine is now closed, the history and specimens shown in the DVD are important in mineralogy.

Plans are moving along for the Inspiration Unearthed show August 20 and 21 (set-up on 8/19/22). Nancy Robb continues to gather egg cartons and rocks to put in them along with material for the sand scoop and we are starting to collect the donations for the raffle. More plans will be made at the next meeting (to be announced).

Sincerely, Marcia Goetz, *President*

WE'RE ON THE WEB!

[PASADENALAPIDARY.ORG](http://PASADENALAPIDARY.ORG)