



# ROCKHOUND RAMBLINGS

JANUARY 2023 • PASADENA LAPIDARY SOCIETY® EDITOR: ALYSON NISHIMURA



Photo by Sue Pang

## *~A Beginner's Guide to Quartzsite 2023~*

It's almost time for the famous Pow Wow rock show in Quartzsite, Arizona. Although smaller than Tucson, Quartzsite is much closer to home and has plenty of vendors and collecting opportunities to keep you occupied for several days. Vendors bring their finds from around the world hoping to sell to the snowbirds and rockhounds. Following is a brief description of the three main rock shows occurring in Quartzsite in January.

The Quartzite Improvement Association (QIA) is a local club that is holding their annual show, the Pow Wow, from January 18-22, 2023. The address is **235 East Ironwood, Quartzsite AZ 85346**. It is a mostly outdoor show with hundreds of vendors, display cases, and food. Although there is plenty of free parking, the show is popular so you may have to park far away. To avoid the long walk, take advantage of the free "hay ride" shuttles the QIA sponsors and runs throughout the show.

Continued on pg 2



## Officers, Trustees, and Committee Chairs

### Officers

David Lacy, President [deeceelink@earthlink.net](mailto:deeceelink@earthlink.net)  
 Christian Schulze, Vice President [christian.w.schulze@gmail.com](mailto:christian.w.schulze@gmail.com)  
 Sue Dekany, Secretary [PLS\\_secretary@protonmail.com](mailto:PLS_secretary@protonmail.com)  
 Philip Lahr, Treasurer [plkslahr@att.net](mailto:plkslahr@att.net)  
 Sue Pang, Federation Dir. [sp2019pi@gmail.com](mailto:sp2019pi@gmail.com)

**Trustees** Ellen Ferrell, Chris Kyte, Marcia Goetz

**Bulletin:** Alyson Nishimura **Librarian:** Jennifer Jang

**Display Table:** Ferdie Sanchez **Display Table:** Ferdie Sanchez

**Web Editor:** Elizabeth Weston **Publicity:** Elizabeth Weston

**Membership:** Sue Pang **Sunshine:** Mona Ross

**Webmaster:** Ben Shutman **Workshop:** Phil Lahr

**Ways & Means:** Michelle Schurer **Hospitality:** Mona Ross

### Contact Us

**Email:** [info@PasadenaLapidary.org](mailto:info@PasadenaLapidary.org) **Instagram:** /PasadenaLapidary  
**Facebook:** Pasadena Lapidary Society **Twitter:** @pasalapidary  
 Pasadena Lapidary Society, PO Box 5025, Pasadena, CA 91117-0025  
**Editor:** Alyson Nishimura [pasadenalapeditor@gmail.com](mailto:pasadenalapeditor@gmail.com) Send articles by the 15<sup>th</sup> of the previous month for publication in next month's issue. However, no article is guaranteed to be published.

### Welcome New Members!

We are delighted to have new rock hounds join our society. We welcome John Whittaker and Renee Newman (former member).



**As a reminder: We are accepting your 2023 dues now.**

You can renew in person or via US postal service to PO Box 5025 Pasadena, CA 91117-0025.

\$25.00 for adult member.

\$15 for 2nd adult member.

\$10 for additional adult or Junior member.

~Sue Pang, Membership Chairman

### Meetings

**Board Meetings** – 1st Thursday of the month. Members welcome.

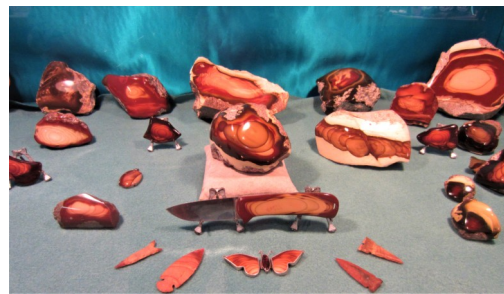
**General Meetings** – Every third Tuesday of the month.

### Pasadena Lapidary Society®

The name Pasadena Lapidary Society (PLS) and its associated logo are registered trademarks of The Pasadena Lapidary Society, Inc. © 2022 The Pasadena Lapidary Society, Inc. Text, images, and other content in this publication are property of The Pasadena Lapidary Society, Inc., except for content that is in the public domain or is used with permission of the copyright holder or qualifies as fair use under copyright law. *Rockhound Ramblings* is available on the PLS website and may be freely linked to, but other distribution or re-publication, in part or whole, is prohibited unless written permission is granted by The Pasadena Lapidary Society, Inc.

## A Beginner's Guide to Quartzsite 2023

Visit the club booth to get a copy of their field trip schedule and maybe buy some raffle tickets. This is the largest rock show occurring in Quartzsite and a wonderful opportunity to purchase a variety of rocks at a reasonable



price. There are two ATM's available on-site, one is in the cafeteria area and the second one is in the main hall.

<http://www.qiaarizona.org/POWWOW-Show.html>

Another must see show is Desert Gardens, which occurs from January 1-February 28, 2023 and is open from 9-5 daily. The address is **1055**

**Kuehn Street Quartzsite, AZ 85346.** Parking and admission are free and there are a plethora of vendors to visit. This show is known for rough material where



you will see crates of rocks from around the world since it is tailored to wholesalers who purchase the material for resale. Desert Gardens hosts an evening auction which is a lively event and a chance to pick up some great bargains.

<https://desertgardensrockgemandmineralshow.com/>

Just down the road, Tyson Wells is hosting their rock and gem show from January 6-15, 2023. The address is **121 W. Kuehn St. Quartzsite, AZ**

**85346.** There is free parking although you may want to arrive in the morning to ensure you find a spot.

There will be rough, cut, and finished material. It is



important to note that Tyson Wells has a different show called the Sell-A-Rama occurring between January 20-29, 2023. If you go to Tyson Wells in the timeframe between the shows, January 16-19, 2023, there will not be as many vendors open for business.

<https://www.tysonwells.com/rock---gem-show.html>

There is limited lodging in Quartzsite so Blythe (which is 25 miles west) is your best option for a hotel. However, there is plenty of space to dry camp just a





few miles away from the shows. Some of our members prefer to camp in Scadden Wash which is quiet and even has trees for privacy.

I hope this brief summary was useful and gave you an idea of what to expect in Quartzsite.

Have a great time!

Alyson

### General Meeting - January 17, 2023

The January general meeting will occur at 7 pm at The Santa Anita Church, 226 Colorado Street, Arcadia, CA.

This month Dick Weber will introduce us to the colorful world of Fluorite. Due to a spectacular range of colors and well developed crystals, this mineral is highly sought after by collectors. Clear and colorless when pure, fluorite can exhibit every color of the spectrum from the deepest purple to bright oranges and reds. In addition to its aesthetic and scientific value, fluorite is a critical industrial mineral used in the production of thousands of commercial products.



Dick Weber was first introduced to the fluorite deposits of the Mississippi Valley while working on his geology degree. Actively collecting specimens for the last 15 years, he will bring a display showcasing pieces from famous locales.

Curtis Schurer will present the Rock of the Month as he continues with part two of his talk on Jasper. Junior or adult members interested in presenting a five minute "Rock of the Month" presentation should contact Christian at [christian.w.schulze@gmail.com](mailto:christian.w.schulze@gmail.com).

Christian Schulze ordered some lapel pins for the club and will be giving them out at the January general meeting.



Hope to see you there!

### Member-to-Member

We still have the 6-inch trim saw and rotary flat lap that have been cleaned up a little, but both need some work. If you are interested in taking on a small project to get yourself a working piece of equipment, contact Phil at [plkslahr@att.net](mailto:plkslahr@att.net) or 818-926-3163 for details.

If you have something to sell or are looking for something, e-mail Phil by the 15th of the month to have it included in the next bulletin.

### January Field Trips

#### Hauser Geode Beds, January 28, 2023:

The Bureau of Land Management is hosting a Desert Hike at Hauser Geode Beds—Palo Verde, CA, on January 28, 2023, at 9:30 AM. It will be a 1-2 mile walk and talk about the history of the area's minerals with the Bureau of Land Management and local rockhounds in the Hauser Geode Beds. To reserve your spot, call (760) 337-4442 and leave a message with your name and the total number in your party by noon on January 26.

**You will meet at the Hauser Geode Beds at 9:30 am. A high clearance vehicle or 4wd is recommended.** Please dress in layers, bring your own hat, sunscreen, water and snacks and wear hiking shoes/boots.

#### Directions:

**From El Centro, CA,** take Interstate 8 East to Highway 111 North. Drive North on Hwy 111 to Highway 78. Turn east on Hwy 78. Continue driving on Hwy 78 towards Blythe/Palo Verde for approximately 72 miles. Turn left on the Bradshaw Trail/30<sup>th</sup> Avenue and continue West for approximately 11 miles to Milpitas Wash Road. Turn left on Milpitas Wash Road and meet at the 1<sup>st</sup> Geode Bed Sign at the intersection of Wiley's Well Road and BLM Route 518.

**From everywhere else:** Take I-10 to Wiley's Well Road and head south past the prison, past the Campgrounds, and meet at the 1<sup>st</sup> Geode Bed Sign at the intersection of Wiley's Well Road and BLM Route 518.

#### Quartzsite Pow Wow January 18-22, 2023:

The Quartzsite Roadrunner Gem and Mineral Club is hosting fieldtrips from 1/18-1/22/23. There will be two daily trips, each to a different location. There is a \$2.00 fee for non-members of the Quartzsite rockclub to attend the field trips. The trips leave promptly at 9:00am.

<http://www.qjaarizona.org/Powwow-Field-Trip.html>

### Workshop – January 14, 2023

The January workshop will be held on Saturday, January 14 from 9 am to 3 pm. Cost is \$5 for the full day or \$3 for a half day. Join us and get a good start on your New Year's resolution to finish more cabachons or try your hand with the new marble making machine at the workshop. The saws and other equipment are available as usual.

First timers and anyone who needs an orientation needs to rsvp a few days in advance to Marcia at (626) 260-7239 to get directions to the workshop and reserve a space in the orientation. Orientation will start shortly after 9:00 am.

Access the workshop by walking up the alley on the west side of the building and use the sliding door there. Please do not use the door at the loading dock.



Pasadena Lapidary Society, Inc.  
PO Box 5025  
Pasadena, CA 91117-0025



## Christmas Party Recap

The PLS annual Christmas Party was held on Dec 10, 2022 in Arcadia, CA. Set up began at 4pm. Martha Wilson and Mickey Moriarty created wreath center pieces for each table and other glittering holiday decorations. Members brought dishes to share such as meatballs, ham, sausage, soup, appetizers, baked beans, vegetables, fruits, desserts, and drinks such as sparkling ciders. In addition, members brought dried and canned food to donate to the local food bank.

Ed Imlay oversaw the installation of 2023 newly elected and 2nd year officers. But the evening's highlight was the announcement of recipients of 2022 Rockhound of the Year awards to Phil Lahr and Alyson Nishimura (Junior member). By late evening, members enjoyed new finds as part of the traditional gift exchange. Each member also received a goodie bag with a specimen from Janie Duncan's collection. Following the party, volunteers helped with cleanup. With Mona Ross overseeing the planning committee and facility, this year's annual party seemed flawless.

Congratulations to the 2023 PLS Officers below:

President: David Lacy  
VP: Christian Schulze  
Secretary: Sue Dekany  
Treasurer: Phil Lahr  
Federation Director: Sue Pang

PLS would like to thank Marcia Goetz for her service as president and welcome incoming president David Lacy. Marcia will become a member of PLS Trustees and serve with existing trustees Chris Kyte and Ellen Ferrell.



~Sue Pang

WE'RE ON THE WEB!

[PASADENALAPIDARY.ORG](http://PASADENALAPIDARY.ORG)